

Thank you for purchasing this product.  
Before using this product, please read the instructions carefully.  
After reading the instruction manual, please keep it for reference.

## Table of Contents

|                             |     |                                      |    |
|-----------------------------|-----|--------------------------------------|----|
| <b>Caution</b> .....        | 1-3 | <b>Turbo / Turbo Hold Mode</b> ..... | 10 |
| <b>How to Connect</b> ..... | 4-5 | • How to set up Turbo Function ..... | 11 |
| <b>Headset Jack</b> .....   | 6   | • How to change Turbo Speed .....    | 12 |
| <b>Contents</b> .....       | 7   | <b>To Parent/Guardian,</b>           |    |
| <b>Platform</b> .....       | 7   | <b>please read carefully</b> .....   | 13 |
| <b>Layout</b> .....         | 8   | <b>Troubleshooting</b> .....         | 13 |
| <b>Assign Mode</b> .....    | 9   | <b>Main Features</b> .....           | 13 |

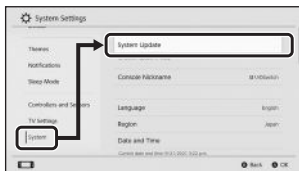


### Caution

\* Please check that your Nintendo Switch is up to date before using this product.



From the Home Menu select 'Settings'.

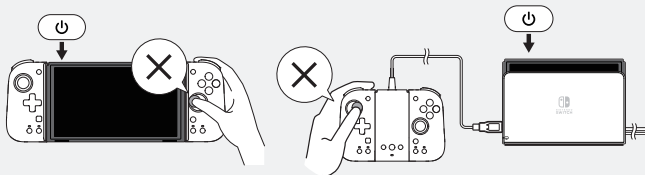


Select 'System' and then 'System Update' to update to the latest system firmware.

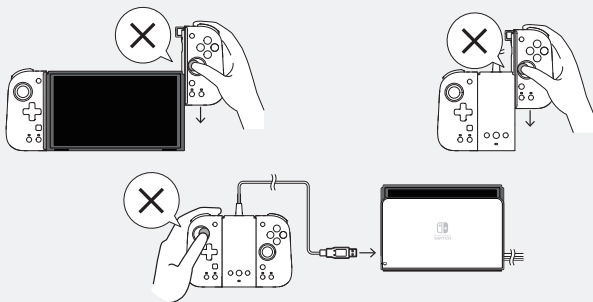
# ! Caution

Do not touch any buttons or analog sticks during any of the following situations. Doing so may cause malfunction.

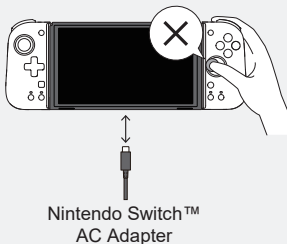
## 1. When turning on the Nintendo Switch system



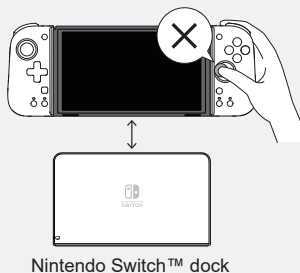
## 2. When attaching / connecting the product to system



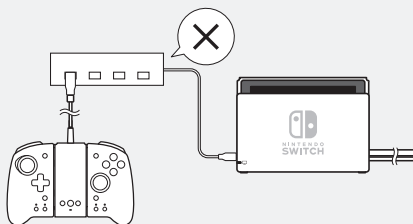
## 3. When connecting and disconnecting the Nintendo Switch™ AC Adapter to the Nintendo Switch system



4. When connecting and disconnecting the Nintendo Switch system to / from the Nintendo Switch™ dock



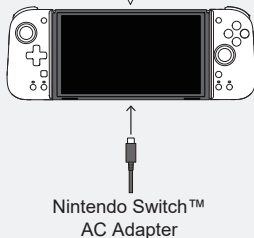
**This product may not function properly if connected via a USB hub.**



**When the Nintendo Switch™ AC adapter is plugged into the Nintendo Switch system, this product's connection may momentarily be lost.**

Connection may be momentarily lost

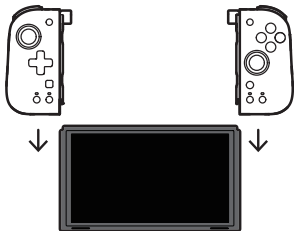
**Additionally, the Turbo / Turbo Hold Mode may also be deactivated.**



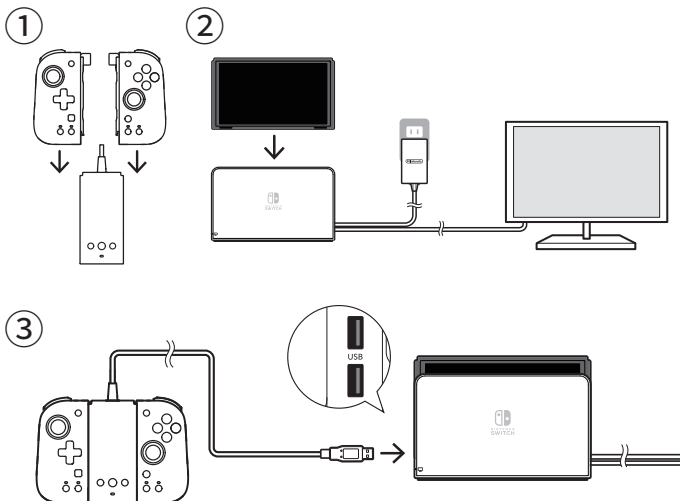
# How to Connect

## 1

### Handheld Mode



### TV Mode



**2**

Press any button (except for those listed below) on the controller to connect to the console.

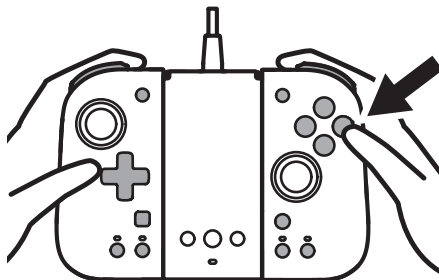
(L Stick / L Stick Button / R Stick / R Stick Button)

\* Please allow some time for the controller to connect.

## Handheld Mode





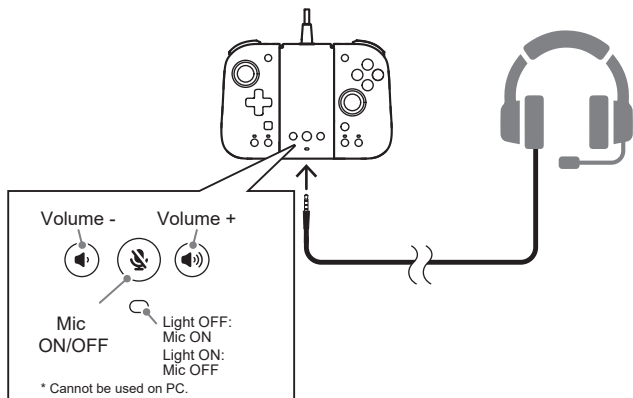
## TV Mode



# Headset Jack

Headphones and headsets can be connected to the Headset Jack

-  Please turn down the volume on the Nintendo Switch before connecting a headset, as the sudden high volume may cause discomfort to your ears.
-  Do not use high volume settings for an extended period of time to avoid hearing loss.

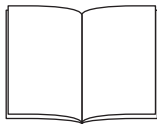


- \* This product is not compatible with the "Nintendo Switch Online" voice chat.
- \* When using the Headset Jack, please disconnect headphones or headsets from the Nintendo Switch™ or dock. If a USB-connected device, such as a headset, headphone, or speaker is connected, sound will only come from the previously connected device.
- \* When using a headset with this product, there will be no sound coming from the TV or Nintendo Switch™.
- \* The headphone jack cannot be used when using this product with a PC.
- \* Some software titles do not support microphones. Please check the instruction manual of the software title before using this product.
- \* This function cannot change the volume of the Nintendo Switch™ or TV.

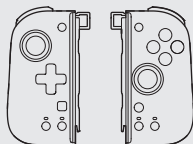
## Contents



Attachment ×1



Instruction manual ×1



Controller (L) ×1

Controller (R) ×1

\* Not included in the "Split Pad Compact Attachment for Nintendo Switch™ / PC"

## Platform

### Nintendo Switch™

### Nintendo Switch™ - OLED Model

#### Important

Before using this product with the Nintendo Switch, please read the following instructions carefully.

Make sure that your Nintendo Switch™ is updated with the latest system software.

\* An internet connection is required to update the Nintendo Switch™ system firmware.

## PC(XInput)

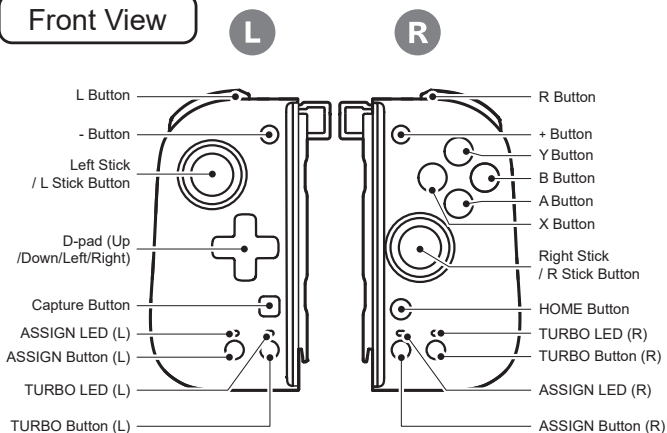
|                    |                 |
|--------------------|-----------------|
| Supported OS       | Windows®11 / 10 |
| Input Method       | XInput          |
| System Requirement | USB (Type-A)    |

\* When using on a PC, please connect the Split Pad Compact to the Attachment. The Split Pad Compact cannot be used by itself on PC.

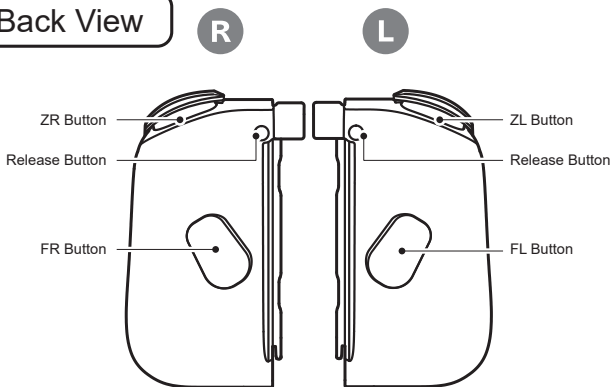
\* Only compatible with Xinput compatible games.  
Not compatible with DirectInput games.

# Layout

## Front View



## Back View





# Assign Mode

Assign mode allows you to assign button functions to the FL and FR buttons.

\* Cannot be assigned to multiple buttons at the same time.

## FL Button

### Assignable buttons

L Button / ZL Button /  
L Stick Button / D-pad (UP, DOWN,  
LEFT or RIGHT) / - Button

## FR Button

### Assignable buttons

R Button / ZR Button /  
R Stick Button / A Button / B Button /  
X Button / Y Button / + Button

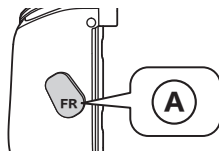
### How to set up



While pressing  
ASSIGN  
Button (L/R)

+

Press the button  
you want to assign  
a function to FL/FR

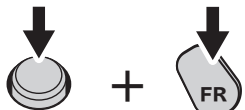


LED On



ASSIGN LED  
turns Red

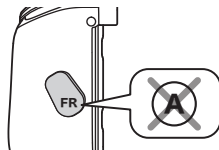
### Unassign



While pressing  
ASSIGN  
Button (L/R)

+

Press FL/FR button



LED Off



ASSIGN LED

\* Please use the ASSIGN Button (L) when setting button functions to FL Button.  
Please use the ASSIGN Button (R) when setting button function to FR Button.

## Turbo / Turbo Hold Mode

Turbo Mode can be set to 3 different speeds.

### Controller (L)

The following buttons can be set to Turbo or Turbo Hold mode

L Button / ZL Button / L Stick Button / D-pad (UP, DOWN, LEFT or RIGHT) \*1 / FL Button\*2

### Controller (R)

The following buttons can be set to Turbo or Turbo Hold mode

R Button / ZR Button / R Stick Button / A Button / B Button / X Button / Y Button / FR Button\*3

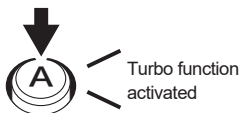
\*1 D-Pad (UP, DOWN, LEFT or RIGHT) is not compatible with the Turbo hold mode, and can only be used to set Turbo mode.

\*2 The FL Button will function only when a button function is assigned to it.

\*3 The FR Button will function only when a button function is assigned to it.

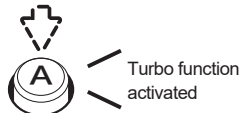
### Turbo Mode

Turbo Mode will be activated while the button is pressed.



### Turbo Hold

Continuously activates the button function without pressing the button.



## TURBO LED

Setting up  
Turbo function  
TURBO LED  
turn Green



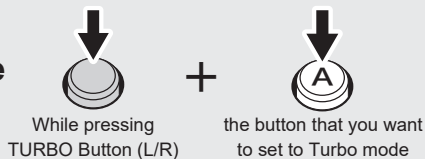
Turbo function  
activated  
TURBO LED  
flashing (Green)\*

\* The TURBO LED (Green) will flash at a rate corresponding to the Turbo speed.

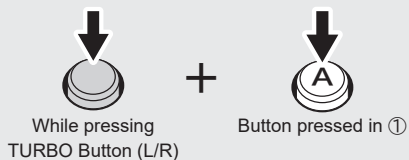
\* If the Nintendo Switch™ AC adapter is connected to the Nintendo Switch™ while using the product in portable mode, it may cause a momentary loss of connection or deactivate the TURBO / TURBO hold function.

# How to set up Turbo Function

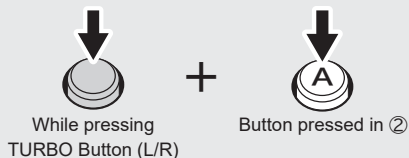
## ① Turbo Mode ON



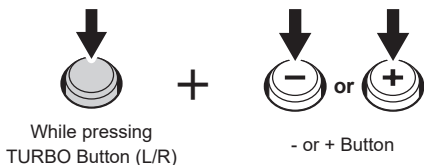
## ② Turbo Hold ON



## ③ Turbo OFF



## Turbo OFF (All buttons)



# How to change Turbo Speed

Turbo mode can be set to 3 different speeds



+



While pressing  
TURBO Button  
(L/R)

Stick (L/R)

**Decrease the speed  
by one level**



+



While pressing  
TURBO Button  
(L/R)

Stick (L/R)

**Increase the speed  
by one level**

- \* Please use the TURBO Button (L) and the Left Stick when adjusting the Turbo Speed on (L).  
Please use the TURBO Button (R) and the Right Stick when adjusting the Turbo Speed on (R).
- \* When setting Turbo speed, Turbo LED (green) will flash at a rate corresponding to the set Turbo speed.
- \* Turbo speed is set to 10 times/second by default.
- \* Analog Sticks must be returned to the neutral position before changing to the next turbo speed.



## Caution To Parent/Guardian, please read carefully

- This product contains small parts. Keep away from children under 3 years old.
- Keep this product away from small children or infants. Seek medical attention immediately if any small parts are swallowed.
- Long cord. Strangulation hazard.
- Keep the product away from dusty or humid areas.
- Do not use this product if it has been damaged or modified.
- Do not get this product wet. This may cause an electric shock or malfunction.
- Do not place this product near heat sources or leave under direct sunlight for an extended period. Overheating may cause malfunction.
- Do not apply strong impact or weight on the product.
- Do not disassemble, modify, or attempt to repair this product.
- If product needs cleaning, use only a soft dry cloth. Do not use any chemical agents like benzene or thinner.
- Do not use this product for anything other than its intended purpose.  
We are not responsible for any accidents or damages in the event of use other than the intended purpose.

## Troubleshooting

### Before using this product

- Make sure the controller is attached to the Nintendo Switch™ or the attachment properly.
- Make sure that your Nintendo Switch™ is updated to the latest system firmware.

### The controller is not functioning properly

- Remove controller from the Nintendo Switch™ or the attachment and reattach it until you hear a click.
- Do not touch the Left Analog Stick / Right Analog Stick or any other button when connecting the USB plug or attaching the Split Pad Compact.

### The analog sticks are not responding correctly

- Remove and reconnect the Split Pad Compact from the Nintendo Switch™, or unplug and reconnect the attachment to the dock. Then turn ON the Nintendo Switch™. When reattaching the controller, be careful not to touch the Left Analog Stick / Right Analog Stick or any other button.
- Please rotate the analog sticks two or three times in large circles to calibrate.
- The process above will only work when this product is connected to the Nintendo Switch™ console and the power supply is on.

## Main Features

### Controller (L/R)

External Dimensions : W 2 × D 4.1 × H 1.7 in / W 5 × D 10.4 × H 4.2 cm

Weight : 0.18 lbs / 80 g each

Connection method : Rail connector (\* This product is not wireless)

### Attachment part

External Dimensions : W 1.9 × D 3.9 × H 1.2 in / W 4.75 cm × D 9.9 × H 2.95 cm

Weight : 0.33 lbs / 150 g (including cables)

Cable Length : 10 ft / 3 m

Connection method : USB Type-A

**THE FCC WANTS YOU TO KNOW**

This device complies with part 15 of the FCC Rules. Operation is subject to the following two conditions: (1) This device may not cause harmful interference, and (2) this device must accept any interference received, including interference that may cause undesired operation.

**NOTE:** This equipment has been tested and found to comply with the limits for a Class B digital device, pursuant to part 15 of the FCC Rules. These limits are designed to provide reasonable protection against harmful interference in a residential installation. This equipment generates, uses and can radiate radio frequency energy and, if not installed and used in accordance with the instructions, may cause harmful interference to radio communications. However, there is no guarantee that interference will not occur in a particular installation. If this equipment does cause harmful interference to radio or television reception, which can be determined by turning the equipment off and on, the user is encouraged to try to correct the interference by one or more of the following measures:

- Reorient or relocate the receiving antenna.
- Increase the separation between the equipment and receiver.
- Connect the equipment into an outlet on a circuit different from that to which the receiver is connected.
- Consult the dealer or an experienced radio/TV technician for help.

**CAN ICES-003(B) / NMB-003(B)**

This Class B digital apparatus complies with Canadian ICES-003.

Cet appareil numérique de la classe B est conforme à la norme NMB-003 du Canada.

**Simplified Declaration of Conformity**

Hereby, HORI declares that this product is in compliance with Directive 2014/53/EU.

The full text of the EU declaration of conformity is available at the following internet address:

<https://hori.co.uk/consumer-information/>

For UK: Hereby, HORI declares that this product is in compliance with the relevant statutory requirements.

The full text of the declaration of conformity is available at the following internet address:

<https://hori.co.uk/consumer-information/>

**PRODUCT DISPOSAL INFORMATION**

Where you see this symbol on any of our electrical products or packaging, it indicates that the relevant electrical product or battery should not be disposed of as general household waste in Europe. To ensure the correct waste treatment of the product and battery, please dispose of them in accordance with any applicable local laws or requirements for disposal of electrical equipment or batteries. In so doing, you will help to conserve natural resources and improve standards of environmental protection in treatment and disposal of electrical waste.

**US****Warranty**

HORI warrants to the original purchaser that the product purchased new in its original packaging shall be free of any defects in material and workmanship for a period of 90 days from the original date of purchase.

If the warranty claim cannot be processed through the original retailer, please address directly to HORI at [info@horiusa.com](mailto:info@horiusa.com). Please visit <http://stores.horiusa.com/policies/> for warranty details.

**EU****Warranty**

For all warranty claims made within the first 30 days after purchase, please check with the retailer where the original purchase was made for details. If the warranty claim cannot be processed through the original retailer or for any other inquiries pertaining to our products, please address directly to HORI at [info@horiuk.com](mailto:info@horiuk.com).

- Does not have the following functions.
  - Gameplay that requires the following features may not work as desired with the Split Pad Compact.
    - gyro sensors • accelerometer • motion sensors • player LED • HD rumble • notification light
    - NFC touchpoint
- The image on the package may differ from the actual product.
- The manufacturer reserves the right to change the product design or specifications without notice.
- Nintendo Switch is a registered trademark of Nintendo. © 2023 Nintendo. Licensed by Nintendo.
- HORI & HORI logo are registered trademarks of HORI.
- All other trademarks are the property of their respective owners.